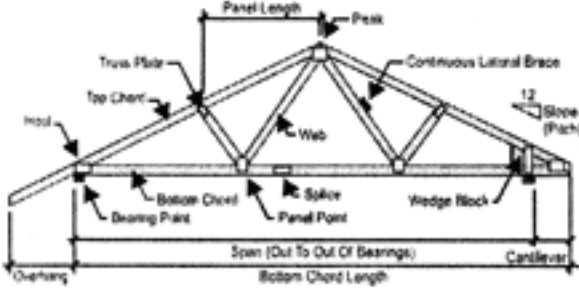
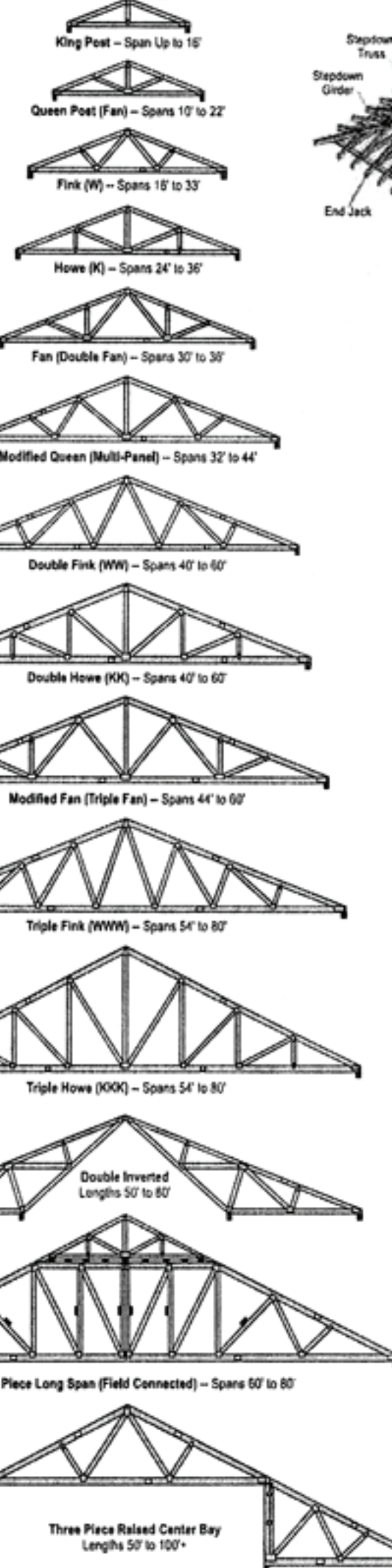


Typical Wood Truss Configurations

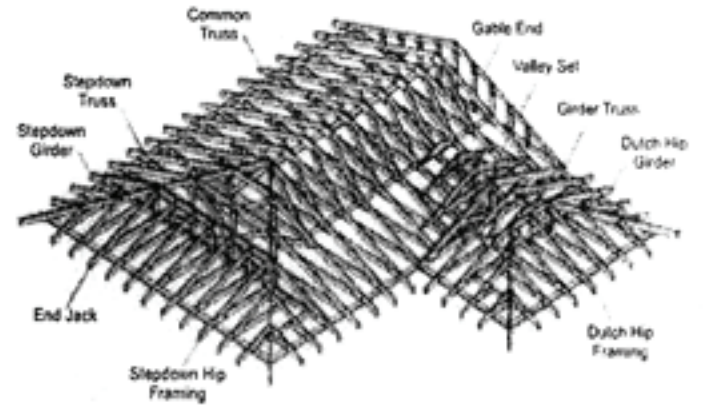
Parts Of A Truss



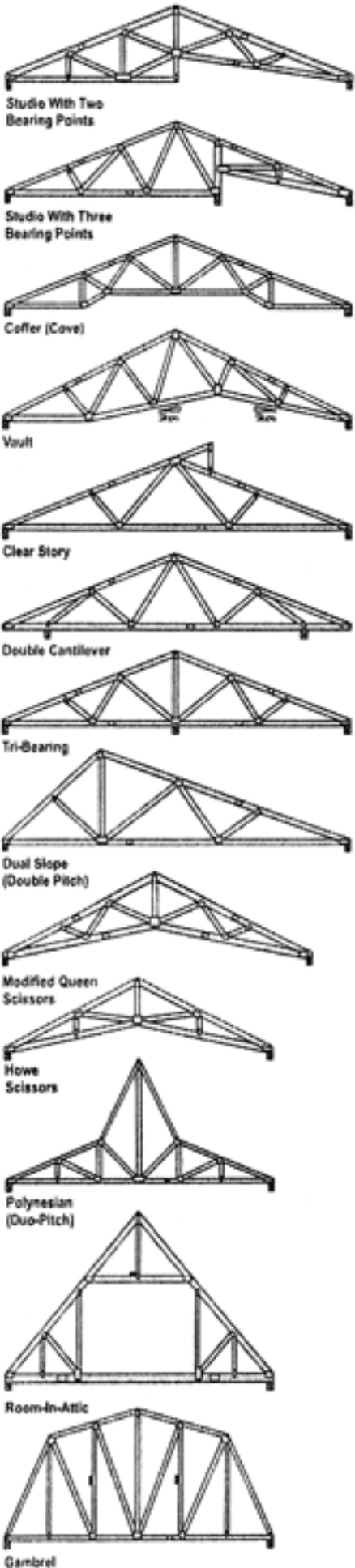
Common Trusses & Their Spans



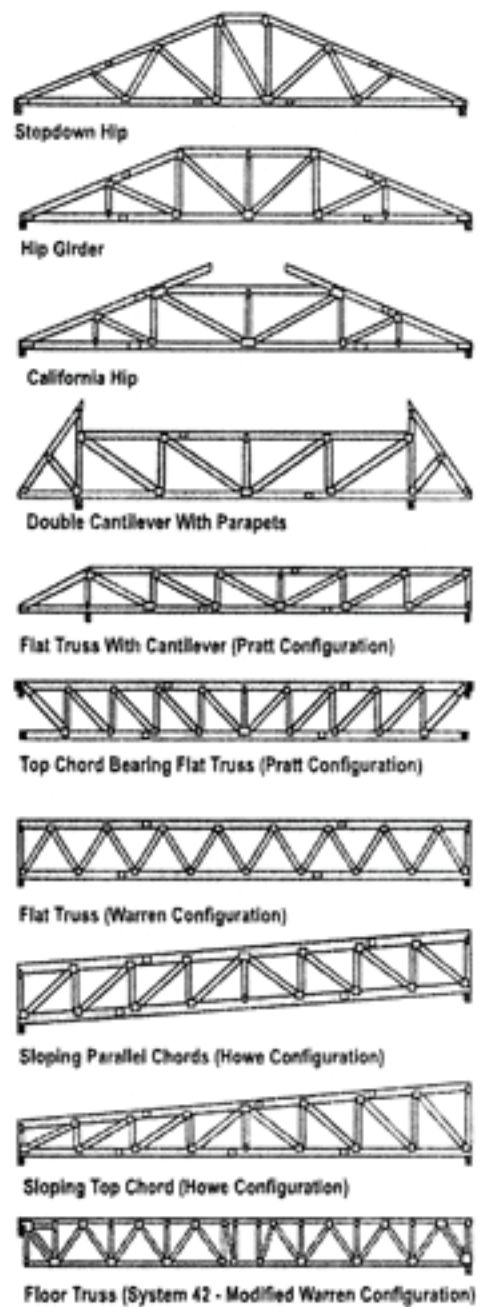
Parts Of A Truss Framed Roof



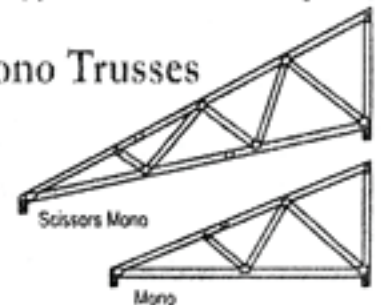
Typical Triangular Trusses



Typical Flat & Parallel Chord Trusses



Mono Trusses



Wood trusses are pre-built components that function as structural support members. A truss commonly employs one or more triangles in its construction. The wood truss configurations illustrated on this chart are a representative sampling.

The number of panels, configuration of webs and length of spans will vary according to given applications, building materials and regional conditions. Always refer to an engineered drawing for the actual truss design.